



Department of Public Works  
**Engineering Division**  
 Robert F. Phillips, P.E., City Engineer

City-County Building, Room 115  
 210 Martin Luther King, Jr. Boulevard  
 Madison, Wisconsin 53703  
 Phone: (608) 266-4751  
 Fax: (608) 264-9275  
[engineering@cityofmadison.com](mailto:engineering@cityofmadison.com)  
[www.cityofmadison.com/engineering](http://www.cityofmadison.com/engineering)

**Assistant City Engineer**  
 Gregory T. Fries, P.E.

**Principal Engineer 2**  
 Christopher J. Petykowski, P.E.  
 John S. Fahrney, P.E.

**Principal Engineer 1**  
 Christina M. Bachmann, P.E.  
 Eric L. Dundee, P.E.

**Facilities & Sustainability**  
 Jeanne E. Hoffman, Manager

**Operations Manager**  
 Kathleen M. Cryan

**Mapping Section Manager**  
 Eric T. Pederson, P.S.

**Financial Manager**  
 Steven B. Danner-Rivers

September 20, 2017

**NOTICE OF ADDENDUM  
 ADDENDUM 1  
 CONTRACT NO. 8000  
 E. GILMAN STREET, N. PINCKNEY STREET, AND N. BUTLER STREET  
 RESURFACING WITH UTILITIES ASSESSMENT DISTRICT - 2017**

Revise and amend the contract document(s) for the above project as stated in this addendum, otherwise, the original document shall remain in effect.

**SPECIAL PROVISIONS:**

ADD TO END OF SECTION D:

**BID ITEM 90030 – REMOVE OR ABANDON PIPE**

**DESCRIPTION**

Work under this item shall include the removal or abandonment with slurry of existing sewer pipe as shown on the plan set. The Contractor shall determine, based on ability to protect previously installed utilities, whether existing sewer pipe shall be removed or abandoned with slurry. The Contractor shall prioritize the removal of sewer pipe unless it is determined that removal would damage previously installed utilities. If it is determined that removal will damage previously installed utilities, Contractor shall get approval from City Engineer before abandoning sewer pipe with slurry.

**METHOD OF MEASUREMENT**

REMOVE OR ABANDON PIPE shall be measured the linear foot removed or abandoned with slurry.

**BASIS OF PAYMENT**

REMOVE OR ABANDON PIPE shall be measured as described above and shall be full compensation for all work, materials, and incidentals needed to complete the work as described above.

**PROPOSAL:**

Action	Bid Item	Description	Original Quantity	New Quantity
ADD	90030	REMOVE OR ABANDON PIPE	0 LF	496 LF
MODIFY	20314	REMOVE PIPE (SANITARY)	540 LF	44 LF

**PLAN SET:**

9/20/2017-8000 Addendum 1.doc

September 20, 2017

Page 2

Remove and replace plan sheet U2, U3, U4, & U6 with attached revised plan sheet U2, U3, U4, & U6.

Please acknowledge this addendum on page E1 of the contract documents and/or in Section E: Bidder's Acknowledgement on Bid Express.

Electronic version of these documents can be found on the Bid Express web site at:

<http://www.bidexpress.com>

If you are unable to download plan revisions associated with the addendum, please contact the Engineering office at 608-266-4751 receive the material by another route.

Sincerely,

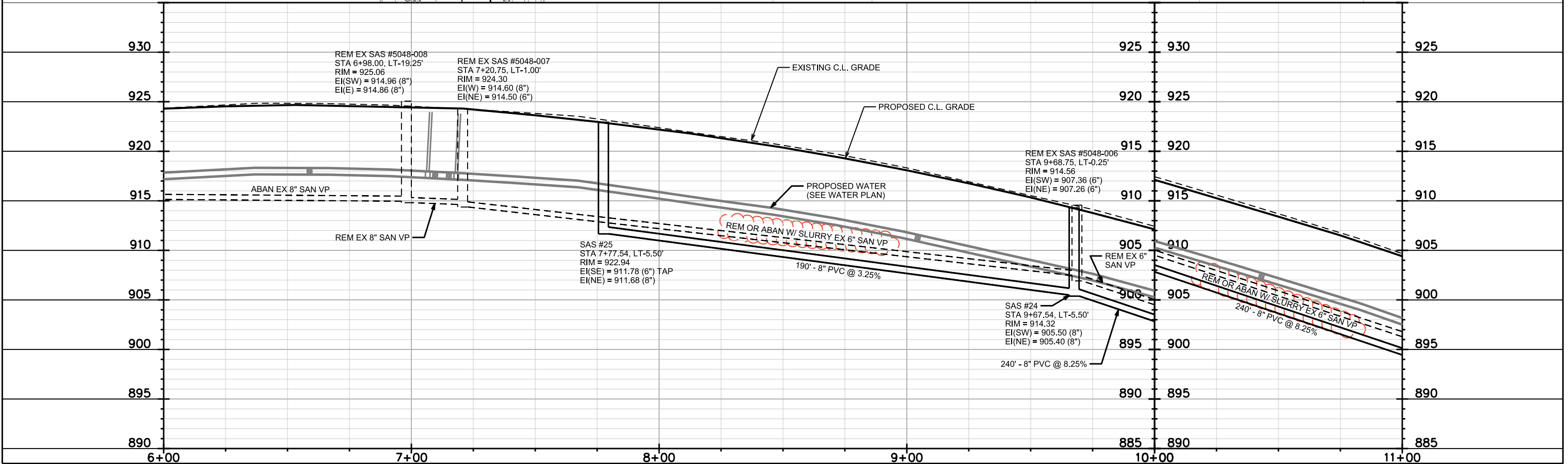
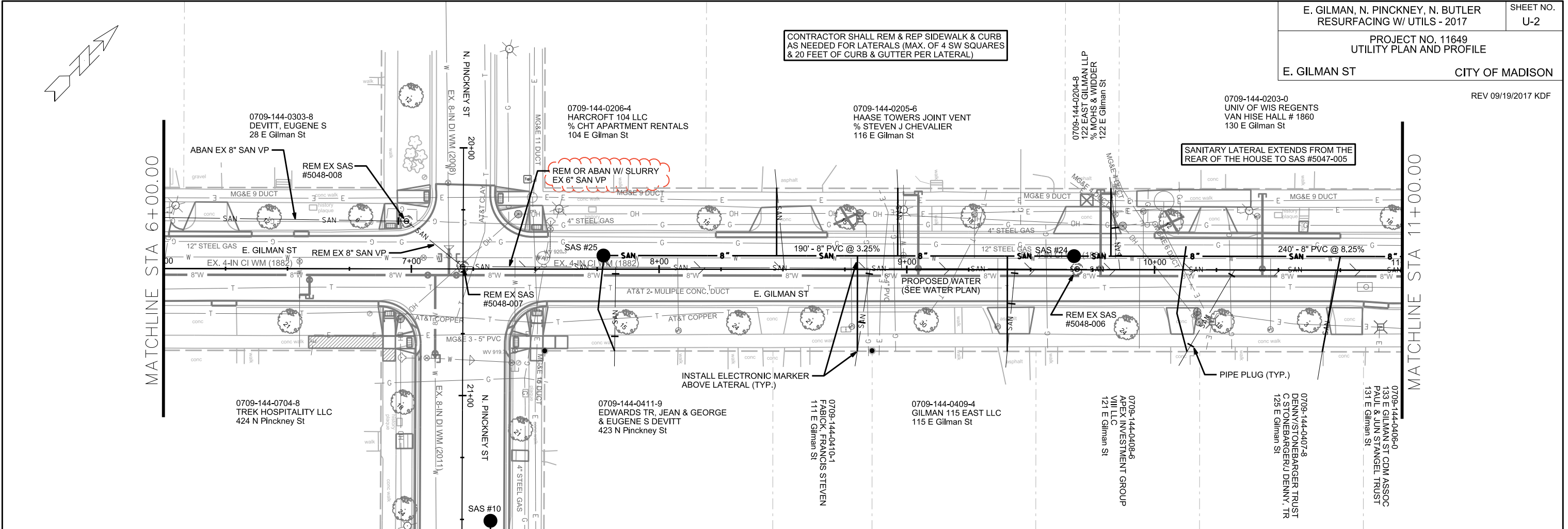
A handwritten signature in black ink, appearing to read "Robert Phillips". The signature is stylized with large, overlapping loops for the letters.

---

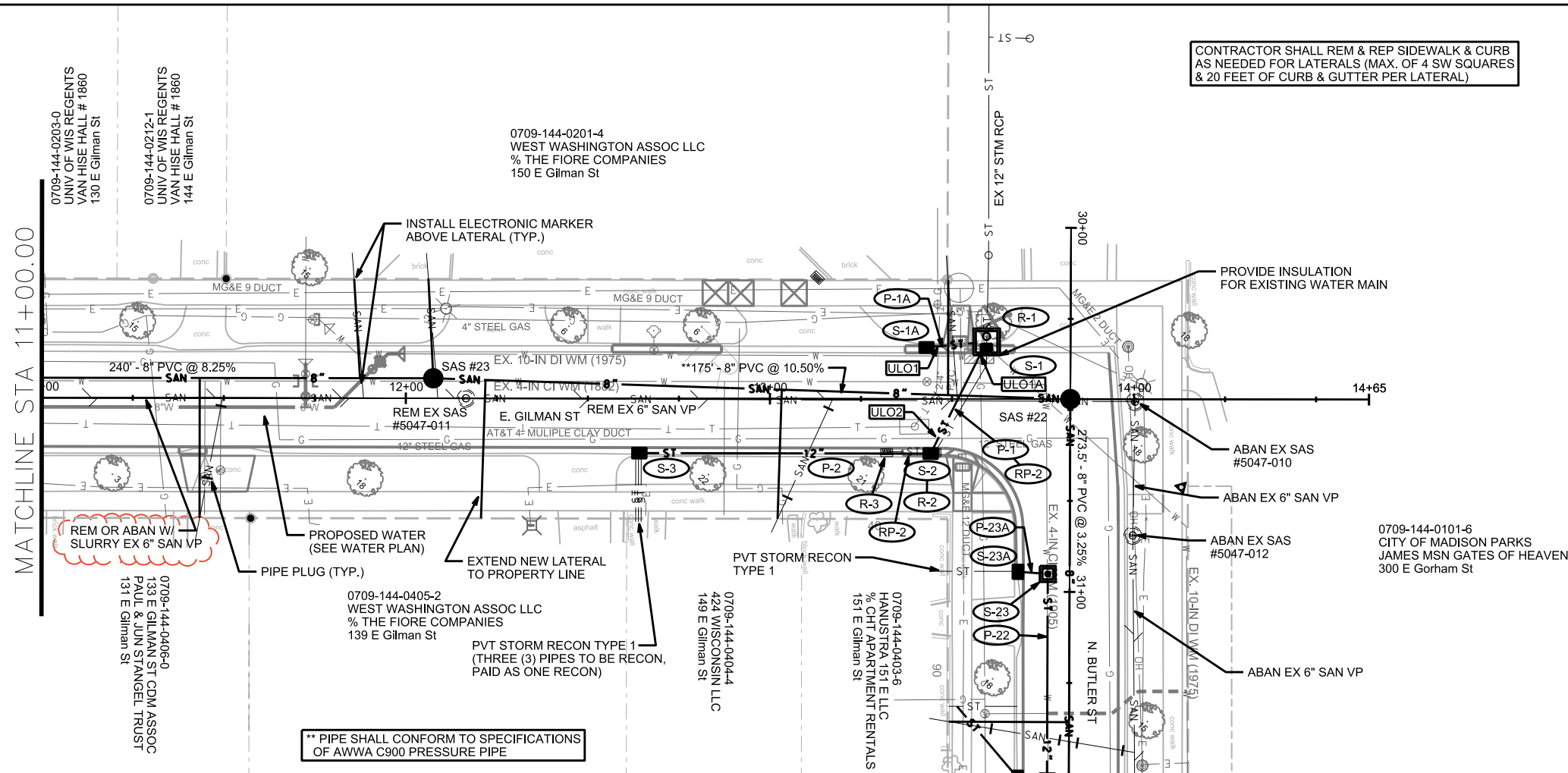
Robert F. Phillips, P.E., City Engineer

CONTRACTOR SHALL REM & REP SIDEWALK & CURB  
AS NEEDED FOR LATERALS (MAX. OF 4 SW SQUARES  
& 20 FEET OF CURB & GUTTER PER LATERAL)

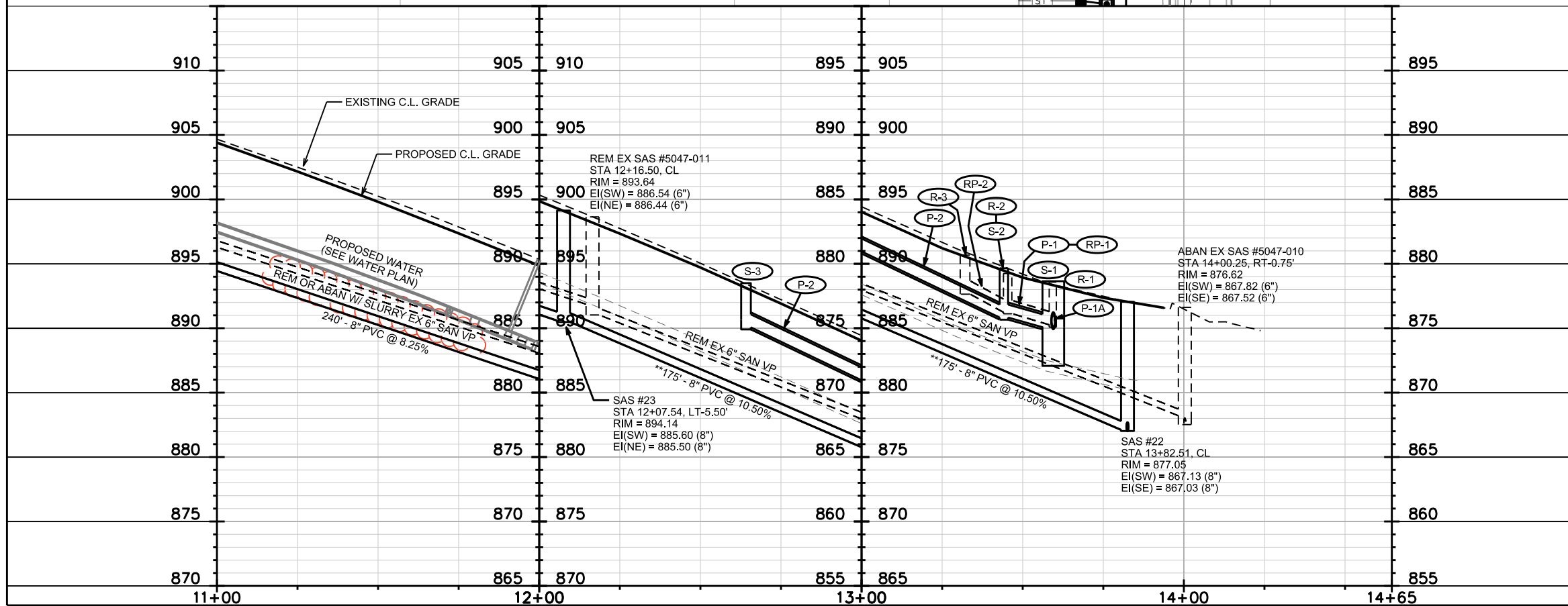
SANITARY LATERAL EXTENDS FROM THE  
REAR OF THE HOUSE TO SAS #5047-005



CONTRACTOR SHALL REM & REP SIDEWALK & CURB  
AS NEEDED FOR LATERALS (MAX. OF 4 SW SQUARES  
& 20 FEET OF CURB & GUTTER PER LATERAL)



\*\* PIPE SHALL CONFORM TO SPECIFICATIONS  
OF AWWA C900 PRESSURE PIPE

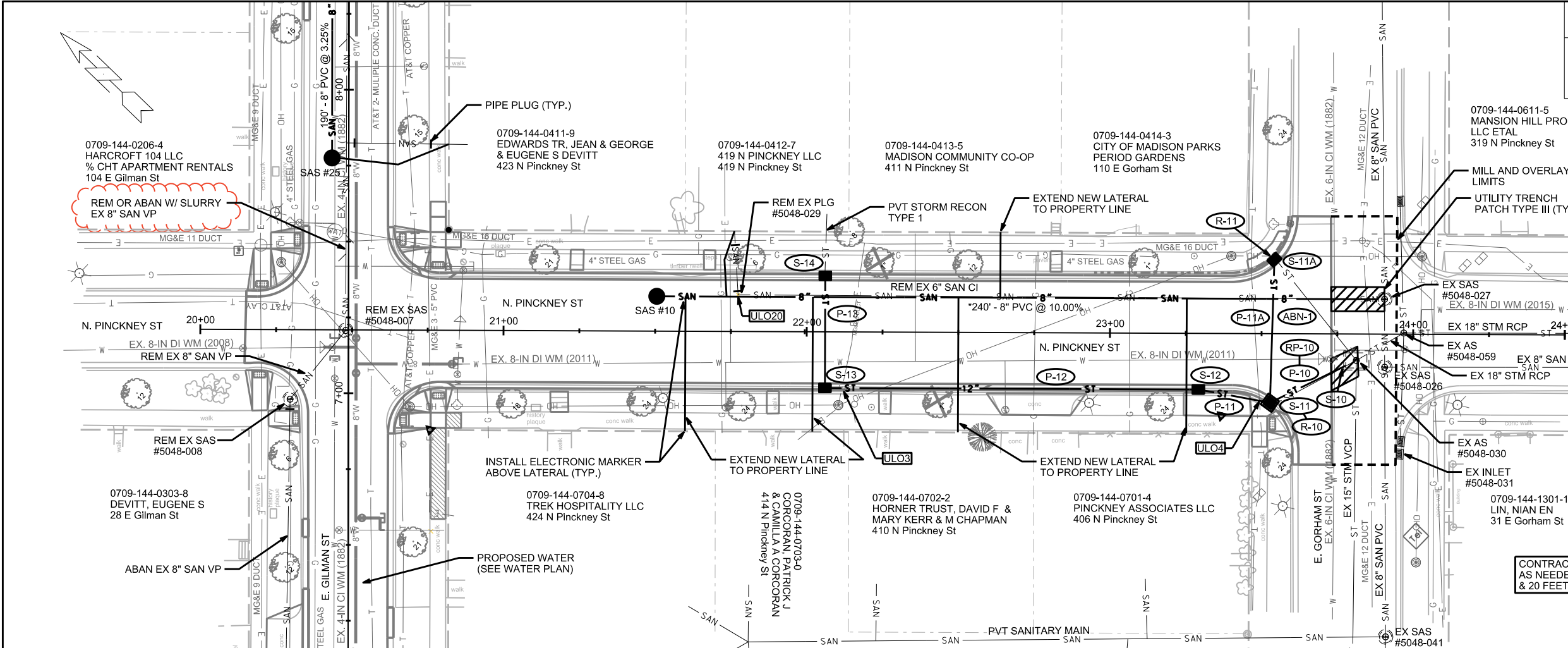


PLOT SCALE:

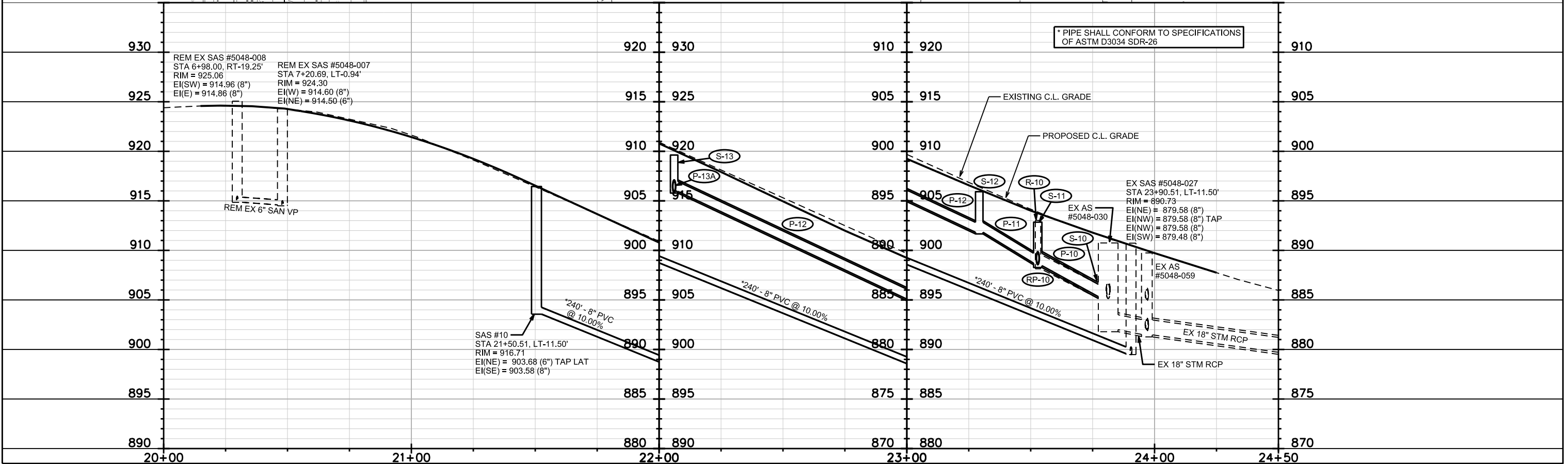
PLOT NAME:

REV. DATE:

ORIGINATOR: CITY OF MADISON, STREETS DIVISION



CONTRACTOR SHALL REM & REP SIDEWALK & CURB AS NEEDED FOR LATERALS (MAX. OF 4 SW SQUARES & 20 FEET OF CURB & GUTTER PER LATERAL)



PLOT SCALE:

PLOT NAME:

REV. DATE:

ORIGINATOR: CITY OF MADISON, STREETS DIVISION

# SANITARY SEWER SCHEDULE

\*REV 9/19/2017 KDF

E. GILMAN, N. PINCKNEY, N. BUTLER RESURFACING W/UTILS - 2017	SHEET NO. U-6
PROJECT NO. 11649 SANITARY SEWER SCHEDULE CITY OF MADISON	

## PROPOSED SANITARY STRUCTURES

SAS NO.	STATION	LOCATION (OFFSET)	TOP OF CASTING	E.I.	DEPTH	NOTES
<b>EAST GILMAN STREET</b>						
SAS #1	3+40.14	LT-5.50	916.12	902.02	14.10	
SAS #2	5+72.14	LT-5.50	924.04	910.90	13.14	
SAS #22	13+82.51	CL	877.05	867.03	10.02	
SAS #23	12+07.54	LT-5.50	894.14	885.50	8.64	
SAS #24	9+67.54	LT-5.50	914.32	905.40	8.92	
SAS #25	7+77.54	LT-5.50	922.94	911.68	11.26	
<b>NORTH PINCKNEY STREET</b>						
SAS #10	21+50.51	LT-11.50	916.71	903.58	13.13	
<b>NORTH BUTLER STREET</b>						
SAS #20	33+76.85	LT-20.75	867.06	856.45	10.61	
SAS #21	33+20.55	CL	869.83	858.05	11.78	

## PROPOSED SANITARY PIPES

FROM (DNSTM)	TO (UPSTM)	DWNSTRM E.I.	UPSTRM E.I.	PLAN (PAY) LGTH (FT)	SLOPE (%)	PIPE SIZE	PVC TYPE	NOTES
<b>EAST GILMAN STREET</b>								
EX SAS 5048-048	SAS #1	901.80	902.02	44.5	0.50%	8"	SDR-26	-
SAS #1	SAS #2	902.12	910.90	234	3.75%	8"	SDR-26	-
SAS #22	SAS #23	867.13	885.50	175	10.50%	8"	C900	-
SAS #23	SAS #24	885.60	905.40	240	8.25%	8"	SDR-35	-
SAS #24	SAS #25	905.50	911.68	190	3.25%	8"	SDR-35	-
<b>NORTH PINCKNEY STREET</b>								
EX SAS 5048-027	SAS #10	879.58	903.58	240	10.00%	8"	SDR-26	-
<b>NORTH BUTLER STREET</b>								
SAS #20	SAS #21	856.55	858.05	60	2.50%	8"	SDR-35	-
SAS #21	SAS #22	858.15	867.03	273.5	3.25%	8"	SDR-35	-

## SANITARY STRUCTURE REMOVALS

STRUCTURE ID NO.	STATION	LOCATION (OFFSET)	TOP OF CASTING	E.I.	DEPTH	NOTES
<b>EAST GILMAN STREET</b>						
SAS 5048-009	5+38.75	LT-21.50	924.66	915.26	9.40	-
SAS 5048-017	5+75.00	RT-18.25	924.45	911.75	12.70	-
SAS 5048-008	6+98.00	LT-19.25	925.06	914.86	10.20	-
SAS 5048-007	7+20.75	LT-1.00	924.30	914.50	9.80	-
SAS 5048-006	9+68.75	LT-0.25	914.56	907.26	7.30	-
SAS 5047-011	12+16.50	CL	893.64	886.44	7.20	-
<b>NORTH BUTLER STREET</b>						
SAS 5048-010	33+76.85	LT-20.75	867.06	857.21	9.85	-

## SANITARY PIPE REMOVALS

REMOVE FROM	REMOVE TO	LGTH (FT)	PIPE TYPE	PIPE SIZE	PAID (Y/N)	NOTES
<b>EAST GILMAN STREET</b>						
SAS 5048-007	SAS 5048-008	29	VP	8"	Y	-
* SAS 5048-006	SAS 5048-007	248	VP	6"	Y	[2]
* SAS 5047-011	SAS 5048-006	248	VP	6"	Y	[2]
SAS 5047-010	SAS 5047-011	184	VP	6"	N	15' OF REMOVAL PAID FOR
<b>NORTH PINCKNEY STREET</b>						
SAS 5048-027	PLG 5048-029	211	CI	6"	N	-

## SANITARY STRUCTURE ABANDONMENTS

STRUCTURE ID NO.	STATION	LOCATION (OFFSET)	TOP OF CASTING	E.I.	DEPTH	NOTES
<b>EAST GILMAN STREET</b>						
SAS 5047-010	14+00.25	RT-0.75	876.62	867.52	9.10	-
<b>NORTH BUTLER STREET</b>						
SAS 5047-012	30+84.50	LT-17.25	875.93	863.53	12.40	-

## SANITARY PIPE ABANDONMENTS

REMOVE FROM	REMOVE TO	LGTH (FT)	PIPE TYPE	PIPE SIZE	PAID (Y/N)	NOTES
<b>EAST GILMAN STREET</b>						
SAS 5048-048	SAS 5048-017	269	VP	6"	N	[1]
SAS 5048-008	SAS 5048-009	154	VP	8"	N	[1]
<b>NORTH BUTLER STREET</b>						
SAS #5047-012	SAS #5047-010	33	VP	6"	N	[1]
SAS #5048-010	SAS #5047-012	288	VP	6"	N	[1]

## SPECIFIC NOTES

- [1] PIPE PLUGS SHALL BE CONSIDERED INCIDENTAL TO ABANDONMENT
- [2] PIPE SHALL EITHER BE REMOVED OR ABANDONED WITH SLURRY. REMOVAL OR ABANDONMENT SHALL BE PAID FOR UNDER BID ITEM 90030